

USER MANUAL

Solar LED Lithium Light Kit



Non contractual photo



100% Green
Energy



Rechargeable
Lithium Battery



PIR Motion
Sensor



IP65 Rated
Waterproof



5V USB
Charge



Integrated
Design



Bugs
Free





WHAT IS IT?

Solar led batten light is the pioneer model comparing with the normal solar powered tube light, widely used in many applications, such as office, home, garage, caravan, carports, bus stations, warehouses, camping tents, kinds of shelves, farm tents, sideways, emergency camps, aid tents, temporary or permanent caves, or any kinds of sheds of paths, etc.

Solar led batten light is a kit that contains everything, like rechargeable lithium battery, solar controller, solar panel. Easy installation in less than 15 minutes, you just need to plug solar panel into the light by DC connector. It provides a high brightness for long time continuous lighting output, and inbuilt PIR sensor can save power if sunshine is not strong enough.

This solar led batten light is also supported to work during day time while being charged, under manual operation. By programming the remote control, you can increase or decrease the brightness as you like, there are 2 hours, 4 hours and 6 hours for optional. Pressing the button on light, you will find out 3 lighting modes, brightness and time can be set easily by remote control.

One 5V USB output was added to charge your mobile, What's more, an external switch is allowed to be connected to this light via a DC port. The ON/OFF and brightness can be operated by hand just like the traditional lights. This is a very useful advantage for the applications which need to do the lighting operation by hand instead of automatic.

It is a perfect lighting solution for the remote area where is lack of power and lighting.

CONTENT OF PACKAGING:

Solar Batten Light	1 pc
Solar Panel + 5m cable + 2 brackets	1 pc
Wall Controller + 4 m cable	1 pc
Remote Control	1 pc
Fixing dowels and SST304 screws.	1 pc
User Manual	1 pc

ADVANTAGES

1. ON / OFF mode Night & Day (works manually day and night)
2. 130 degree motion detection area.
3. Manual dimmer mode
4. Timer mode : Turns ON/OFF automatically after 2H, 4H or 6H.
5. Automatic Mode: Working from dusk to dawn automatically.



SPECIFICATION

Size	LED Max	Max lumen	Battery	Solar Panel	Cable	IP Rate
360mm	12W	1200lm	3.7V 12AH	10W 6V	5.0 M	IP65
600mm	24W	2400lm	3.7V 24AH	18W 6V	5.0 M	IP65



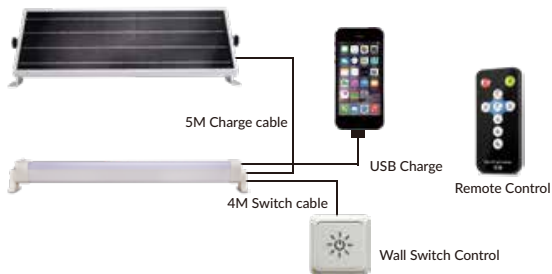
ACCESSORIES



- 1 Push Button (100% Power----> 50% Power -----> 30%+Sensor 100% ----> OFF)
- 2 USB 5V 1A Output. (To charge mobile or other device.)
- 3 DC input connector to connect to 6 plug to wall switch.
- 4 DC input for charge connector for solar panel 6V input. (Warning : Do not use other device or solar panel to charge.)
- 5 Motion Sensor (Two options on remote, 0% + 100% for 24 hours, 30% +100 for 12 hours)
- 6 Wall Switch for extension control. Same function as push button 1 .



CONNECTION DIAGRAM





WALL SWITCH



Wall Switch is a very useful components in this kit, You can use this wonderful solar light fixture in the same way of using a 220V normal light.

1st push : 100% Power
2nd push : 50% Power
3rd push : 30% when nobody there and go to 100% power when sensor is triggered
4th push : Light Off.
(These 4 working programs are looped.)



REMOTE CONTROL



MANUAL switch ON/OFF , 100% full power



AUTOMATIC ON/OFF up dawn & dark , 100% full power



Increase the brightness by 20%



Decrease the brightness by 20%



Light is 0% (off power)
turn ON when sensor is triggered.



Light is ON with 30% power,
and 100% when sensor is triggered.



Set light to work for 2 hours



Set light to work for 4 hours



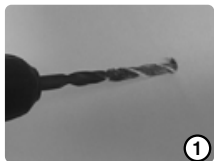
Set light to work for 6 hours

Remark

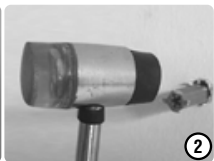
1. When installation is completed, The batten light will start to work under automatic mode as default setting..
2. There is manual mode optional which support light to work at day time. Under manual mode, light will turn off after 12 hours if not turn off by hand.
3. When the red light flashes one time when you try to turn it on, it means there is no power in battery, please try to charge the light well.



INSTALLATION



1. Drill the hole for screws
Screw diameter is 4mm



2. Insert the screw cap into wall
and make it flat as surface



3. Use screw driver to fix
the screws into the wall/ceiling



4. Connect light and solar panel
by the DC solar cable.



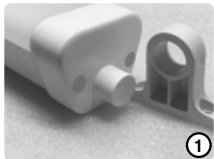
5. Press button to turn on light, 1st push
: 100% power . 2nd : 50% Power . 3rd
push : 30%+ 100% when sensor is
triggered. 4th push : OFF



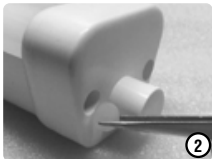
6. Select AUTO or MANUAL mode and
set the lighting program as you like



HOW TO REPLACE BATTERY



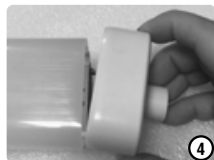
1: Remove the bracket from the side where there are no buttons



2: Use clips or small tools to take out the two silicone plugs.



3: Use 3mm Inner hexagon spanner to loose and remove the two screws.



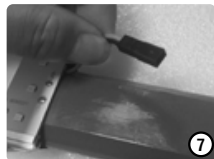
4: Separate the end cap from tube body. (Please do not lost the waterproof silicon ring.)



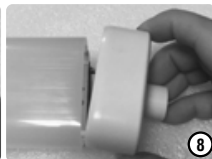
5: Hold the battery cable and take it out carefully from light fixture until you see the DC connectors



6: Disconnect the DC connectors then take out the battery carefully.



7: Hold the cable connector from light, and insert battery properly, then connect battery cable to light cable by DC connectors



8: Put the end cap back to tube body with silicon ring at good position.



9: Repeat the steps of last operations 6-->5-->4-->3-->2-->1.

Tip : When new battery is connected to controller successfully, the red light inside of motion sensor will start ON for 2 seconds, then off.